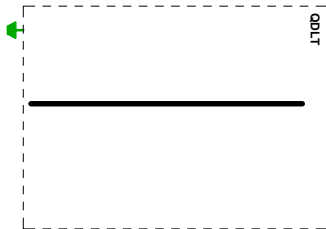
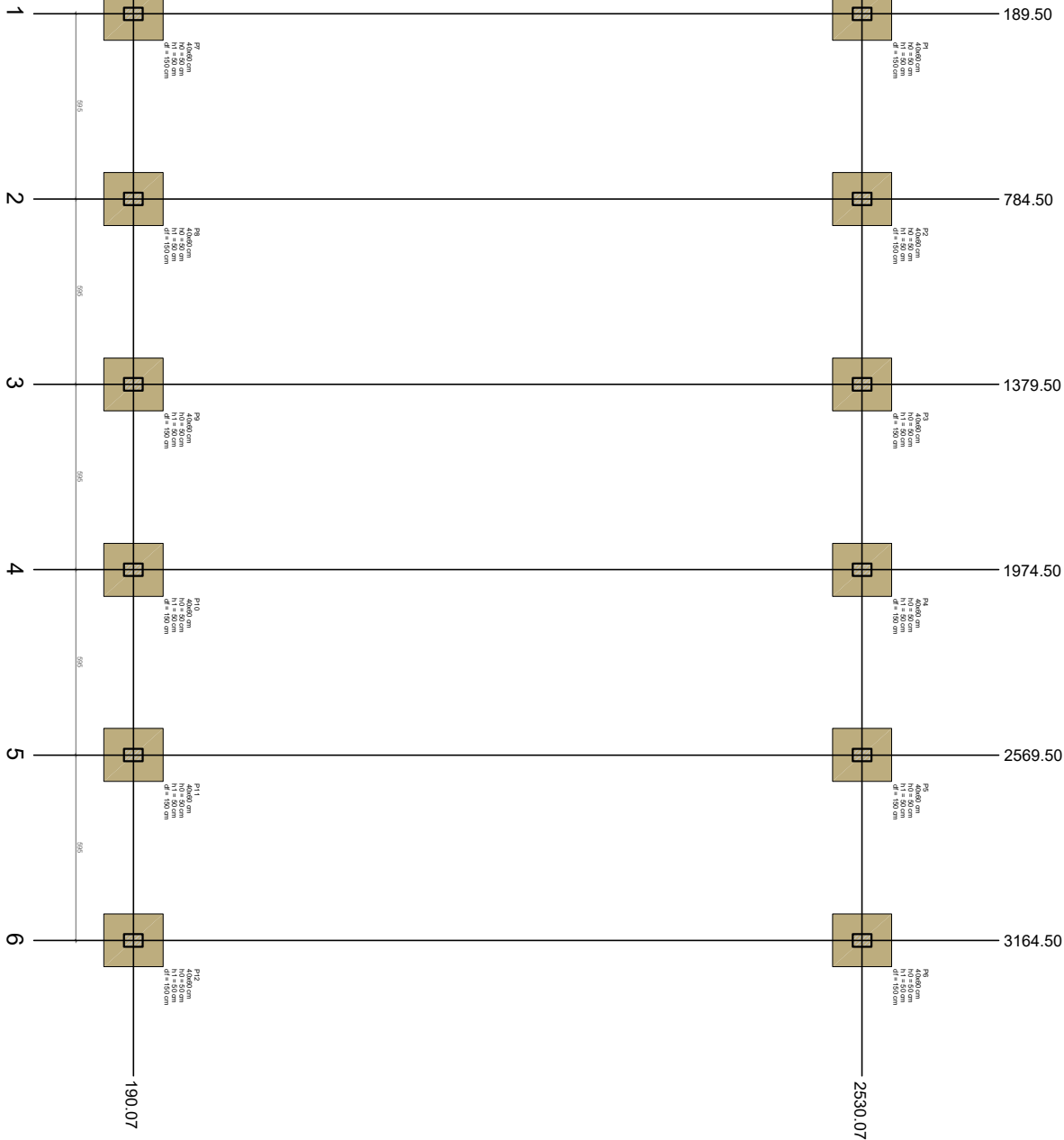




Circuito Nº	Utilização	Tensão (V)		Potência (W)	Corrente nominal (A)	Número de janelas	Seção do condutor adotado (mm²)	% Queda de Tensão	
		Tensão	Voltagem					Fase R	Fase S
Q04	ILUMINAÇÃO QUADRA	220V	800VA	3,64A	10A	2,5	1,58%	786,03W	
A2	ILUMINAÇÃO QUADRA	220V	800VA	3,64A	10A	2,5	1,75%	786,03W	
A3	ILUMINAÇÃO QUADRA	220V	800VA	3,64A	10A	2,5	1,39%	786,03W	
A4	ILUMINAÇÃO QUADRA	220V	800VA	3,64A	10A	2,5	1,25%	786,03W	
A5	ILUMINAÇÃO QUADRA	220V	800VA	3,64A	10A	2,5	1,11%	786,03W	
A6	ILUMINAÇÃO QUADRA	220V	800VA	3,64A	10A	2,5	0,97%	786,03W	
A7	Circuito Reserva	220V	1200VA	5,45A	10A			1104W	
A8	Circuito Reserva	220V	1200VA	5,45A	10A			1104W	
MÉDIAS		220V	7200VA	32,73A	40A	6	2,48%	6602,14W	





escala 1:75

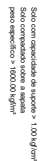
[illegible]

Localidade no sexo X	
Coordenadas	Nome
189.50	p1, p7
784.50	p2, p8
1379.50	p3, p9
1974.50	p4, p10
2569.50	p5, p11
3164.50	p6, p12

[illegible]

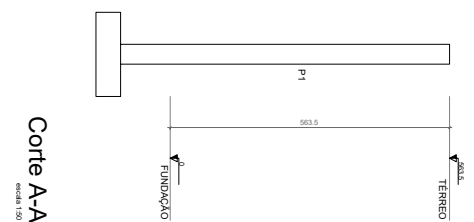
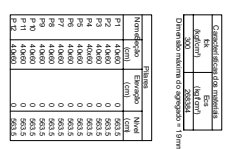


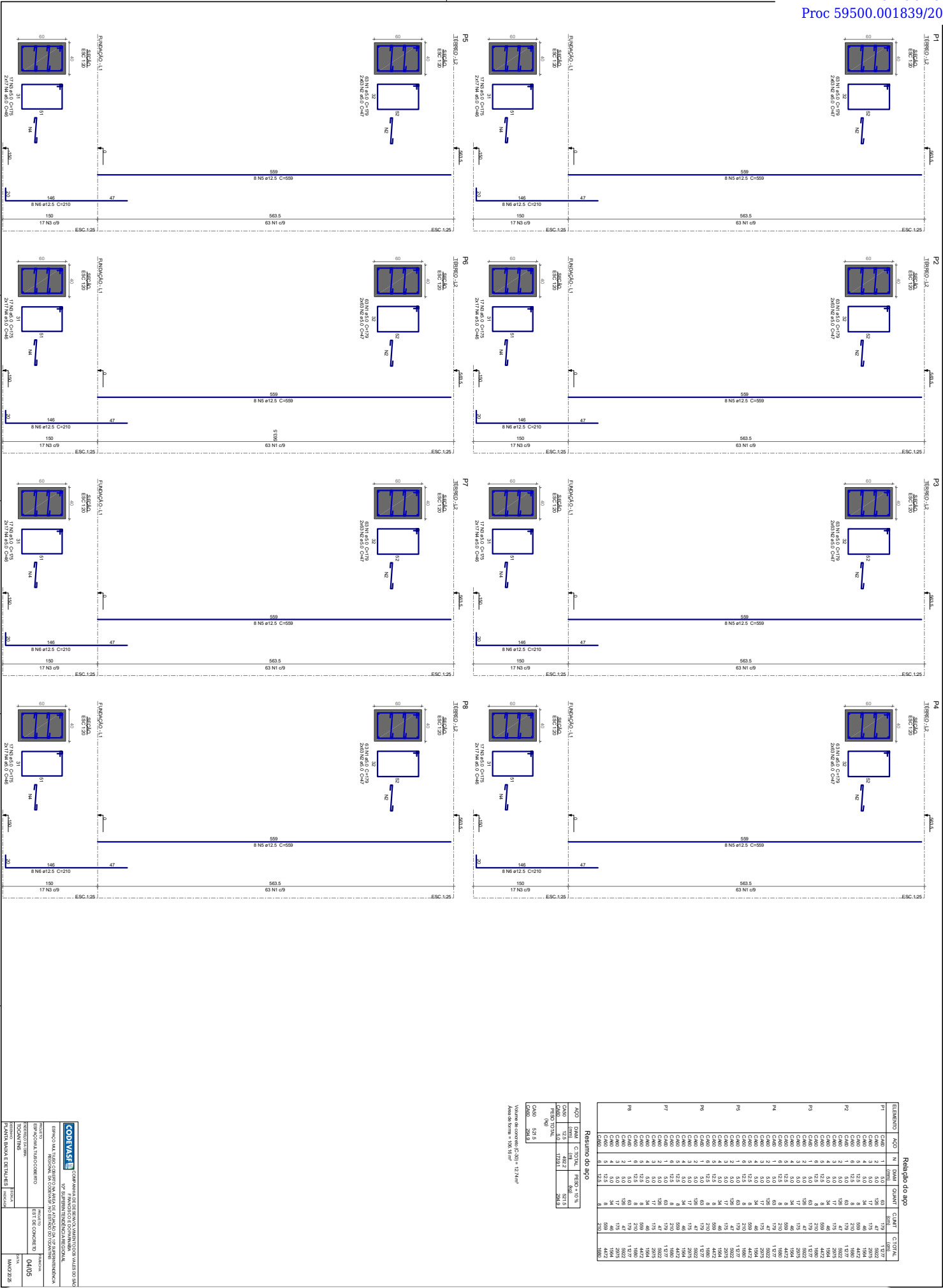
Legenda dos pilares
Pilar que passa

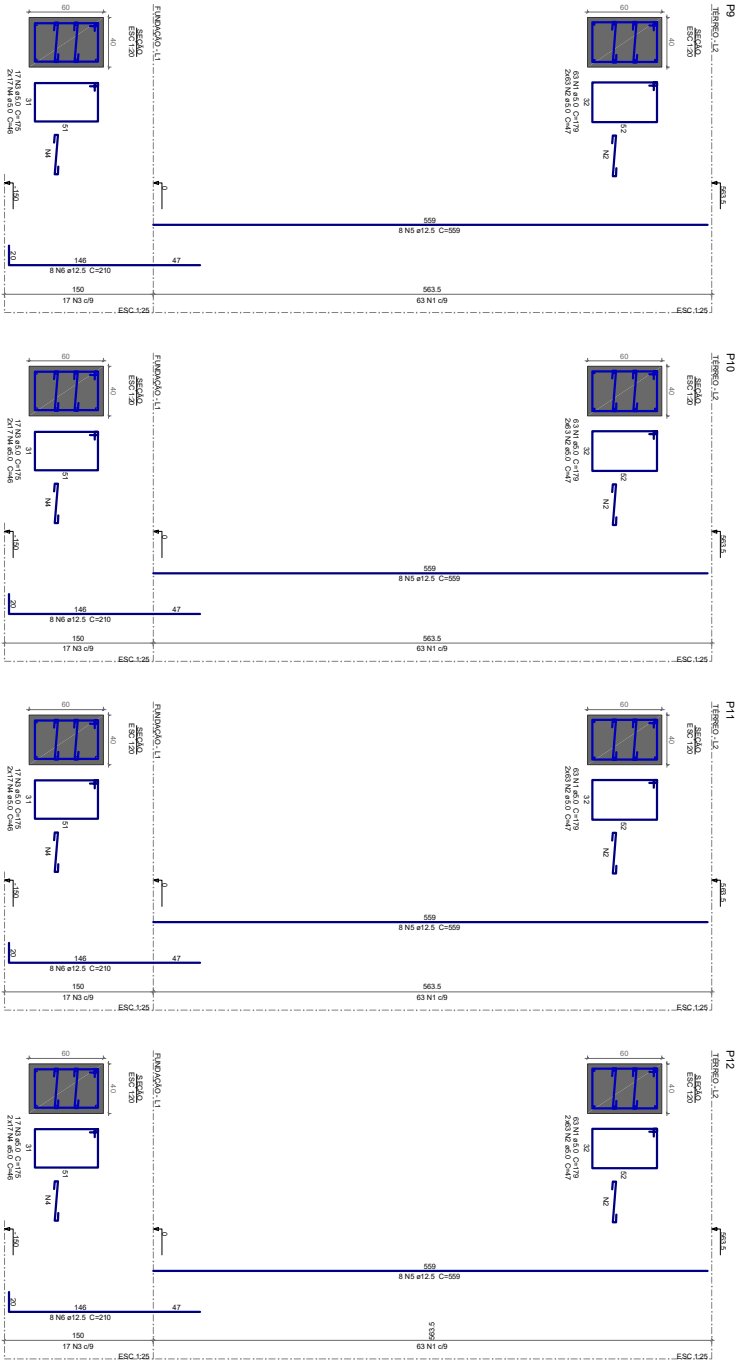


Relação do aço		
N	D/AM mm	QUANT
1	5.0	36
2	10.0	204
3	10.0	180
4	10.0	204
5	10.0	180

Volume de concreto (C-30) = 19,36 m<sup>3</sup>  
Área de forma = 43,2 m<sup>2</sup>







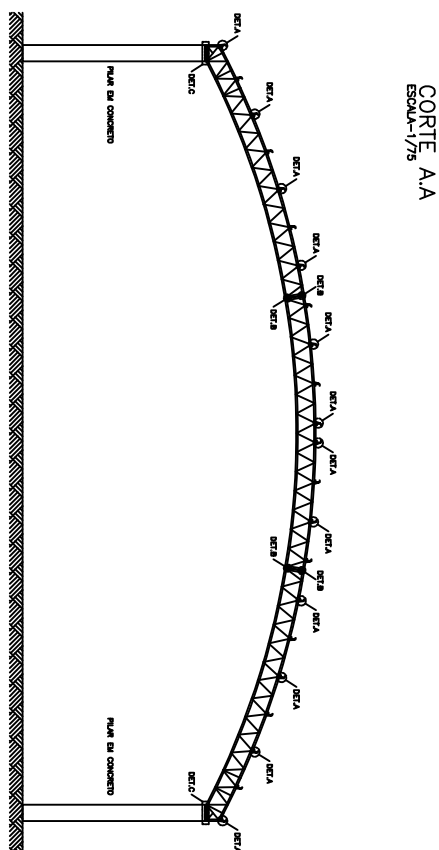
	ELABORATION	ACQ	IN	DEAN	CLIMATE	CT	GLOBAL
P9	C646	1	5.0	63	179	17	17
P8	C646	2	5.0	195	179	17	17
P7	C646	3	5.0	179	179	17	17
P6	C646	4	5.0	179	179	17	17
P5	C646	5	5.0	34	46	17	17
P4	C646	6	5.0	179	179	17	17
P3	C646	7	5.0	179	179	17	17
P2	C646	8	5.0	179	179	17	17
P1	C646	9	5.0	179	179	17	17
P0	C646	1	5.0	63	179	17	17
P9	C646	2	5.0	179	179	17	17
P8	C646	3	5.0	179	179	17	17
P7	C646	4	5.0	179	179	17	17
P6	C646	5	5.0	179	179	17	17
P5	C646	6	5.0	179	179	17	17
P4	C646	7	5.0	179	179	17	17
P3	C646	8	5.0	179	179	17	17
P2	C646	9	5.0	179	179	17	17
P1	C646	1	5.0	179	179	17	17
P0	C646	2	5.0	179	179	17	17
P9	C646	3	5.0	179	179	17	17
P8	C646	4	5.0	179	179	17	17
P7	C646	5	5.0	179	179	17	17
P6	C646	6	5.0	179	179	17	17
P5	C646	7	5.0	179	179	17	17
P4	C646	8	5.0	179	179	17	17
P3	C646	9	5.0	179	179	17	17
P2	C646	1	5.0	63	179	17	17
P1	C646	2	5.0	179	179	17	17
P0	C646	3	5.0	179	179	17	17
P9	C646	4	5.0	179	179	17	17
P8	C646	5	5.0	179	179	17	17
P7	C646	6	5.0	179	179	17	17
P6	C646	7	5.0	179	179	17	17
P5	C646	8	5.0	179	179	17	17
P4	C646	9	5.0	179	179	17	17
P3	C646	1	5.0	179	179	17	17
P2	C646	2	5.0	179	179	17	17
P1	C646	3	5.0	179	179	17	17
P0	C646	4	5.0	179	179	17	17
P9	C646	5	5.0	179	179	17	17
P8	C646	6	5.0	179	179	17	17
P7	C646	7	5.0	179	179	17	17
P6	C646	8	5.0	179	179	17	17
P5	C646	9	5.0	179	179	17	17
P4	C646	1	5.0	179	179	17	17
P3	C646	2	5.0	179	179	17	17
P2	C646	3	5.0	179	179	17	17
P1	C646	4	5.0	179	179	17	17
P0	C646	5	5.0	179	179	17	17
P9	C646	6	5.0	179	179	17	17
P8	C646	7	5.0	179	179	17	17
P7	C646	8	5.0	179	179	17	17
P6	C646	9	5.0	179	179	17	17
P5	C646	1	5.0	179	179	17	17
P4	C646	2	5.0	179	179	17	17
P3	C646	3	5.0	179	179	17	17
P2	C646	4	5.0	179	179	17	17
P1	C646	5	5.0	179	179	17	17
P0	C646	6	5.0	179	179	17	17
P9	C646	7	5.0	179	179	17	17
P8	C646	8	5.0	179	179	17	17
P7	C646	9	5.0	179	179	17	17</

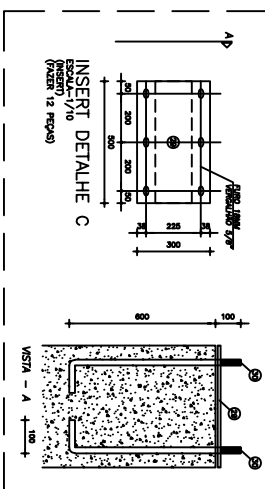
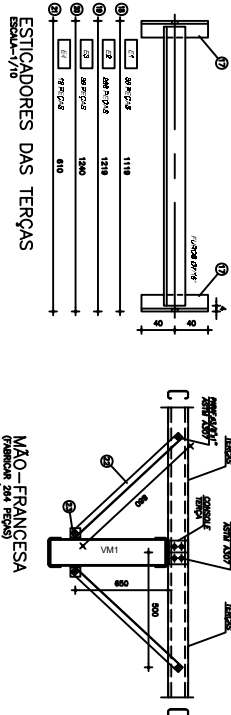
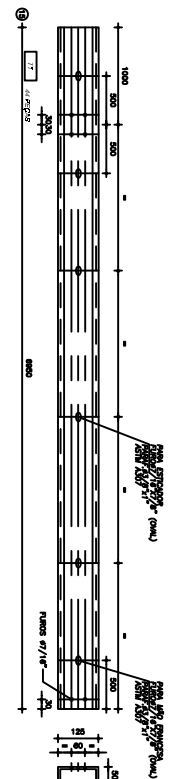
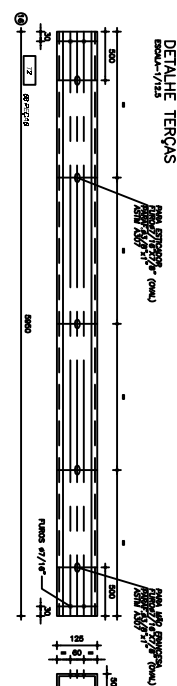
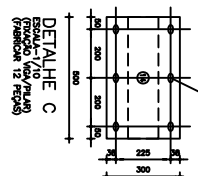
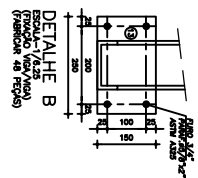
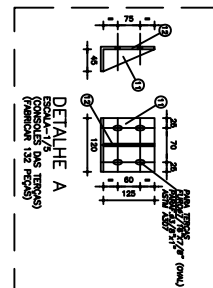
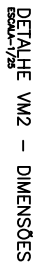
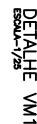
Agg	DAM (mm)	C TOTAL (m <sup>3</sup> )	PESO + 10 % (Kg)
CA50	12.5	246.1	290.8
CA00	5.0	899.6	147.4
PESO TOTAL (Kg)			
CA50	260.8		
CA00	147.4		

Volume de concreto (C-30) = 6,37 m<sup>3</sup>  
Área de forma = 53,08 m<sup>2</sup>

## Resumo do aço

 <b>CODIVASF</b> COMANHIA DE DESINOVAMENTO DOS VALS SUD S.A. FRANCISCO DE BO PARRAIA 10º SUPLENTE EM TIPO REGIONAL		ESPAO MAL INUSO COBERTO NA AREA DE ATUACAO DO 10º SUPLENTE EM TIPO REGIONAL DA CODIVASF NO ESTADO DO TOCANTINS	
PROJETO	ESPACIAL TUBO-COQUEIRO	PROJETO	EST. DE CONCRETO
REQUISITO DA OBR.	TOCANTINS	05/05	DATA
PLANTA BARRA E DETALHES	BOIA	MAIO 2025	
	INDICAR		

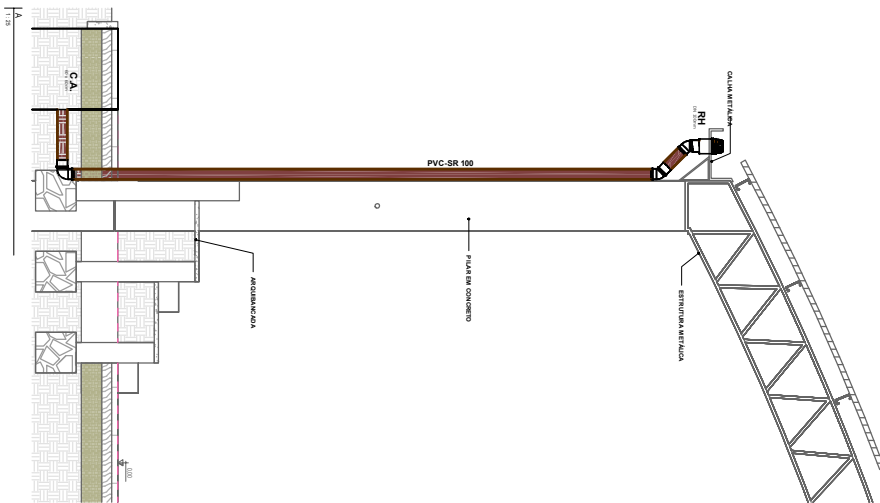
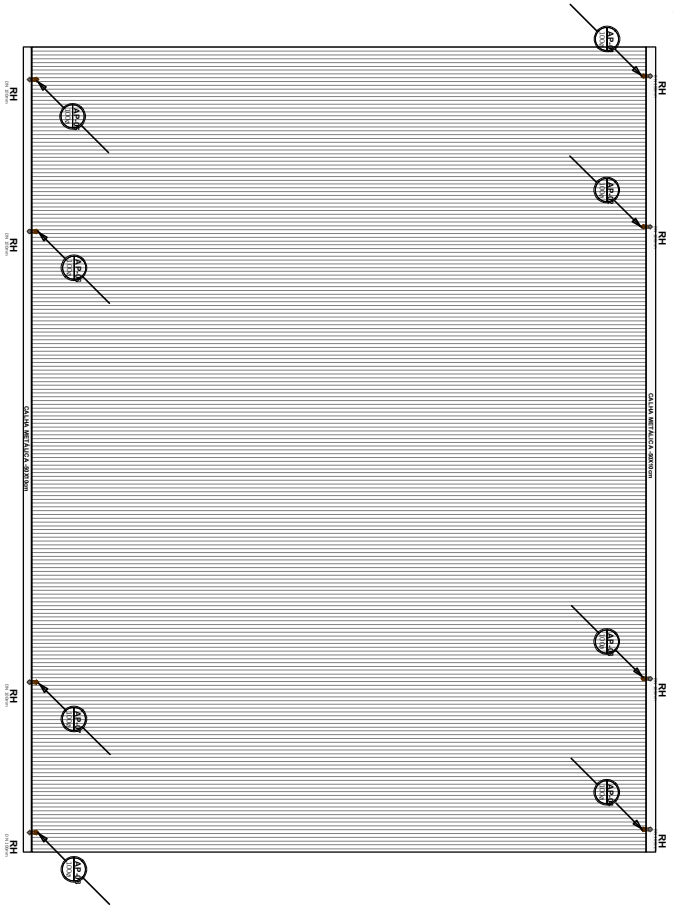
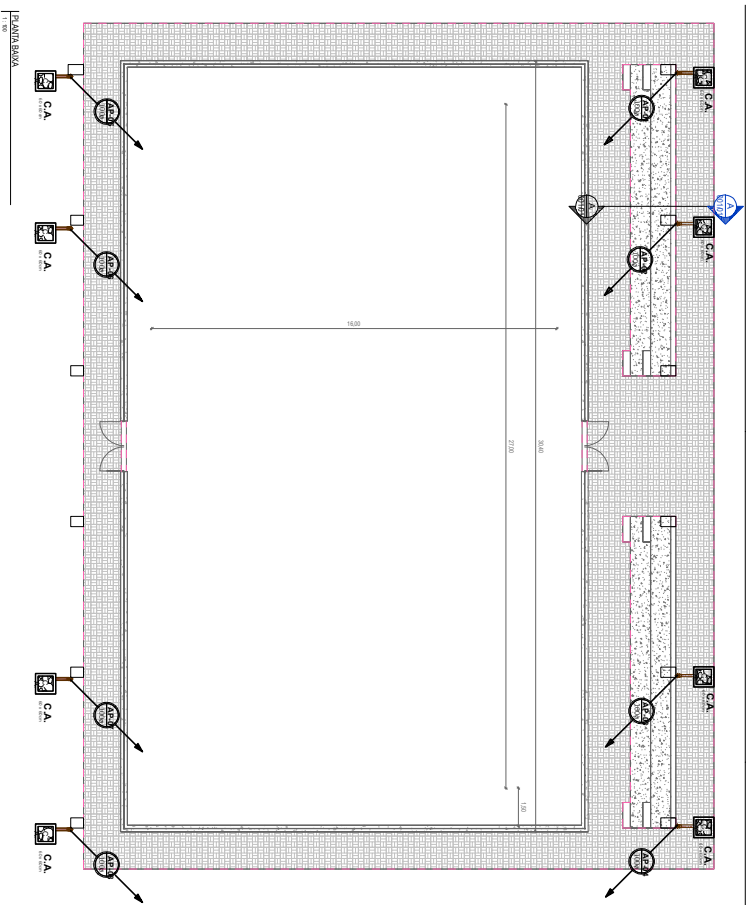
[illegible]

[illegible]

**QUESTION**  
A 20-year-old male presents with a 2-week history of weight loss, decreased energy, and decreased appetite. He has been unable to lose weight despite dieting and exercise. He has noticed that he has been sweating more at night and has been feeling hot. He has also noticed that he has been feeling more thirsty and has been drinking more water. He has been feeling more tired and has been having trouble concentrating. He has been feeling more irritable and has been having trouble sleeping. He has been feeling more nervous and has been having trouble relaxing. He has been feeling more anxious and has been having trouble focusing. He has been feeling more depressed and has been having trouble getting out of bed. He has been feeling more hopeless and has been having trouble seeing the future. He has been feeling more despairing and has been having trouble finding meaning in life. He has been feeling more lonely and has been having trouble connecting with others. He has been feeling more isolated and has been having trouble finding support. He has been feeling more alone and has been having trouble finding comfort. He has been feeling more sad and has been having trouble finding joy. He has been feeling more angry and has been having trouble controlling his emotions. He has been feeling more frustrated and has been having trouble achieving his goals. He has been feeling more discouraged and has been having trouble staying motivated. He has been feeling more discouraged and has been having trouble staying motivated. He has been feeling more discouraged and has been having trouble staying motivated.

**ANSWER**  
The patient's symptoms are consistent with hyperthyroidism. The most common cause of hyperthyroidism is Graves' disease, an autoimmune disorder. The patient's symptoms of weight loss, decreased energy, and decreased appetite are typical of hyperthyroidism. The patient's symptoms of sweating more at night and feeling hot are also typical of hyperthyroidism. The patient's symptoms of feeling more thirsty and drinking more water are also typical of hyperthyroidism. The patient's symptoms of feeling more tired and having trouble concentrating are also typical of hyperthyroidism. The patient's symptoms of feeling more irritable and having trouble sleeping are also typical of hyperthyroidism. The patient's symptoms of feeling more nervous and having trouble relaxing are also typical of hyperthyroidism. The patient's symptoms of feeling more anxious and having trouble focusing are also typical of hyperthyroidism. The patient's symptoms of feeling more depressed and having trouble getting out of bed are also typical of hyperthyroidism. The patient's symptoms of feeling more hopeless and having trouble seeing the future are also typical of hyperthyroidism. The patient's symptoms of feeling more despairing and having trouble finding meaning in life are also typical of hyperthyroidism. The patient's symptoms of feeling more lonely and having trouble connecting with others are also typical of hyperthyroidism. The patient's symptoms of feeling more isolated and having trouble finding support are also typical of hyperthyroidism. The patient's symptoms of feeling more alone and having trouble finding comfort are also typical of hyperthyroidism. The patient's symptoms of feeling more sad and having trouble finding joy are also typical of hyperthyroidism. The patient's symptoms of feeling more angry and having trouble controlling his emotions are also typical of hyperthyroidism. The patient's symptoms of feeling more frustrated and having trouble achieving his goals are also typical of hyperthyroidism. The patient's symptoms of feeling more discouraged and having trouble staying motivated are also typical of hyperthyroidism.





LEGENDA DE SÍMBOLOS



SÍMBOLO DE SÍMBOLOS  
NOME DO COMPONENTE  
NOME DO COMPONENTE

SÍMBOLO DE SÍMBOLOS  
NOME DO COMPONENTE  
NOME DO COMPONENTE

SÍMBOLO DE SÍMBOLOS  
NOME DO COMPONENTE  
NOME DO COMPONENTE

SÍMBOLO DE SÍMBOLOS  
NOME DO COMPONENTE  
NOME DO COMPONENTE

SÍMBOLO DE SÍMBOLOS  
NOME DO COMPONENTE  
NOME DO COMPONENTE

SÍMBOLO DE SÍMBOLOS  
NOME DO COMPONENTE  
NOME DO COMPONENTE

SÍMBOLO DE SÍMBOLOS  
NOME DO COMPONENTE  
NOME DO COMPONENTE

SÍMBOLO DE SÍMBOLOS  
NOME DO COMPONENTE  
NOME DO COMPONENTE

SÍMBOLO DE SÍMBOLOS  
NOME DO COMPONENTE  
NOME DO COMPONENTE

SÍMBOLO DE SÍMBOLOS  
NOME DO COMPONENTE  
NOME DO COMPONENTE

SÍMBOLO DE SÍMBOLOS  
NOME DO COMPONENTE  
NOME DO COMPONENTE

SÍMBOLO DE SÍMBOLOS  
NOME DO COMPONENTE  
NOME DO COMPONENTE

SÍMBOLO DE SÍMBOLOS  
NOME DO COMPONENTE  
NOME DO COMPONENTE

SÍMBOLO DE SÍMBOLOS  
NOME DO COMPONENTE  
NOME DO COMPONENTE

SÍMBOLO DE SÍMBOLOS  
NOME DO COMPONENTE  
NOME DO COMPONENTE

SÍMBOLO DE SÍMBOLOS  
NOME DO COMPONENTE  
NOME DO COMPONENTE

SÍMBOLO DE SÍMBOLOS  
NOME DO COMPONENTE  
NOME DO COMPONENTE

SÍMBOLO DE SÍMBOLOS  
NOME DO COMPONENTE  
NOME DO COMPONENTE

SÍMBOLO DE SÍMBOLOS  
NOME DO COMPONENTE  
NOME DO COMPONENTE

SÍMBOLO DE SÍMBOLOS  
NOME DO COMPONENTE  
NOME DO COMPONENTE

SÍMBOLO DE SÍMBOLOS  
NOME DO COMPONENTE  
NOME DO COMPONENTE

SÍMBOLO DE SÍMBOLOS  
NOME DO COMPONENTE  
NOME DO COMPONENTE

SÍMBOLO DE SÍMBOLOS  
NOME DO COMPONENTE  
NOME DO COMPONENTE

SÍMBOLO DE SÍMBOLOS  
NOME DO COMPONENTE  
NOME DO COMPONENTE

SÍMBOLO DE SÍMBOLOS  
NOME DO COMPONENTE  
NOME DO COMPONENTE

SÍMBOLO DE SÍMBOLOS  
NOME DO COMPONENTE  
NOME DO COMPONENTE

SÍMBOLO DE SÍMBOLOS  
NOME DO COMPONENTE  
NOME DO COMPONENTE

SÍMBOLO DE SÍMBOLOS  
NOME DO COMPONENTE  
NOME DO COMPONENTE

SÍMBOLO DE SÍMBOLOS  
NOME DO COMPONENTE  
NOME DO COMPONENTE

SÍMBOLO DE SÍMBOLOS  
NOME DO COMPONENTE  
NOME DO COMPONENTE

SÍMBOLO DE SÍMBOLOS  
NOME DO COMPONENTE  
NOME DO COMPONENTE

SÍMBOLO DE SÍMBOLOS  
NOME DO COMPONENTE  
NOME DO COMPONENTE

SÍMBOLO DE SÍMBOLOS  
NOME DO COMPONENTE  
NOME DO COMPONENTE

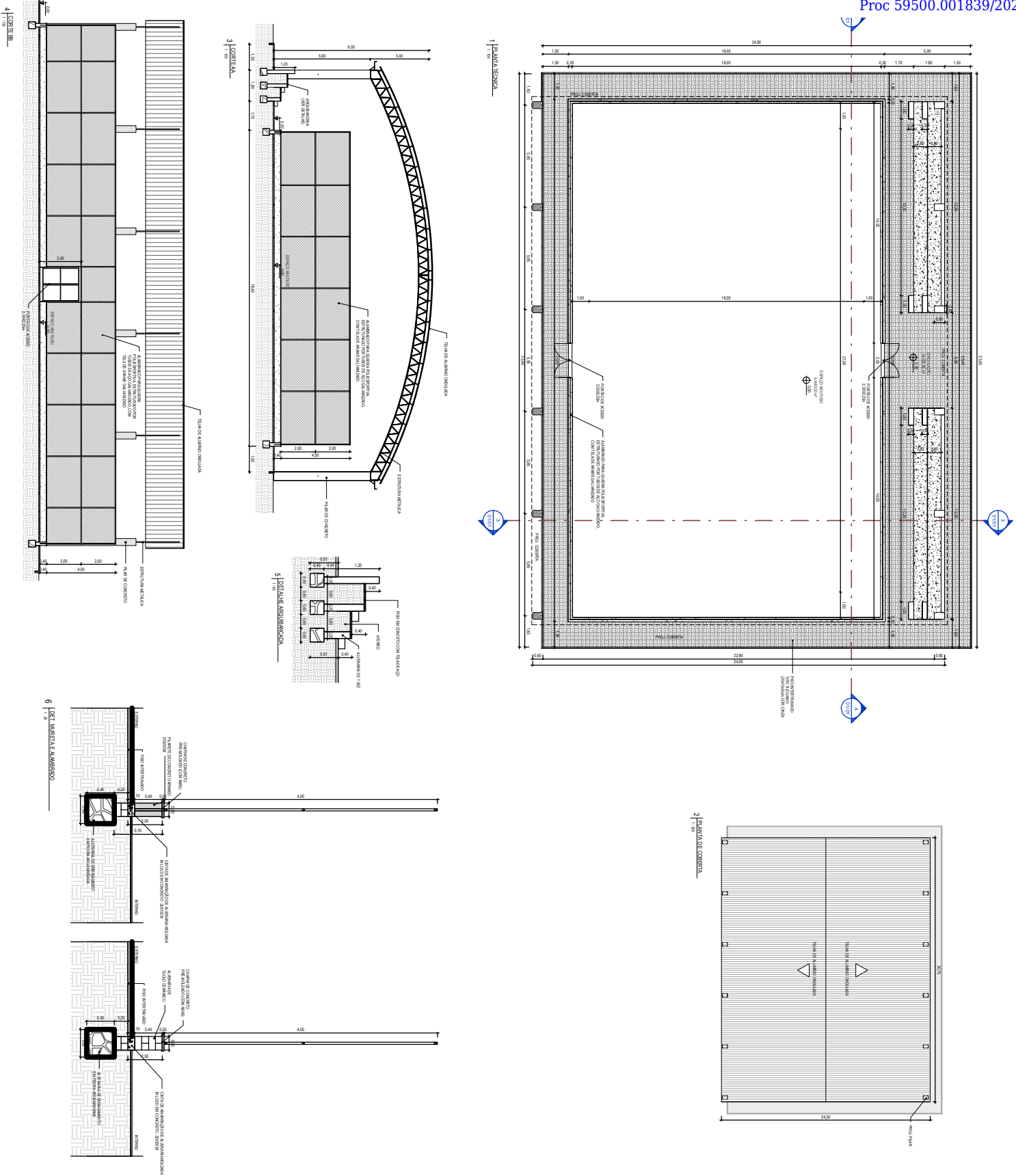
SÍMBOLO DE SÍMBOLOS  
NOME DO COMPONENTE  
NOME DO COMPONENTE

SÍMBOLO DE SÍMBOLOS  
NOME DO COMPONENTE  
NOME DO COMPONENTE

SÍMBOLO DE SÍMBOLOS  
NOME DO COMPONENTE  
NOME DO COMPONENTE

SÍMBOLO DE SÍMBOLOS  
NOME DO COMPONENTE  
NOME DO COMPONENTE

SÍMBOLO DE SÍMBOLOS  
NOME DO COMPONENTE  
NOME DO COMPONENTE



LEGENDA		
	PLANO DE ALUMINIO OXIDADO	INDICAÇÃO DE PLANO DE ALUMINIO OXIDADO
	PLANO DE ALUMINIO OXIDADO	INDICAÇÃO DE PLANO DE ALUMINIO OXIDADO
	PLANO DE ALUMINIO OXIDADO	INDICAÇÃO DE PLANO DE ALUMINIO OXIDADO
	PLANO DE ALUMINIO OXIDADO	INDICAÇÃO DE PLANO DE ALUMINIO OXIDADO
	PLANO DE ALUMINIO OXIDADO	INDICAÇÃO DE PLANO DE ALUMINIO OXIDADO
	PLANO DE ALUMINIO OXIDADO	INDICAÇÃO DE PLANO DE ALUMINIO OXIDADO
	PLANO DE ALUMINIO OXIDADO	INDICAÇÃO DE PLANO DE ALUMINIO OXIDADO
	PLANO DE ALUMINIO OXIDADO	INDICAÇÃO DE PLANO DE ALUMINIO OXIDADO
	PLANO DE ALUMINIO OXIDADO	INDICAÇÃO DE PLANO DE ALUMINIO OXIDADO
	PLANO DE ALUMINIO OXIDADO	INDICAÇÃO DE PLANO DE ALUMINIO OXIDADO

CODIVASF		010
SISTEMA DE ALUMINIO OXIDADO		010
SISTEMA DE ALUMINIO OXIDADO		010
SISTEMA DE ALUMINIO OXIDADO		010
SISTEMA DE ALUMINIO OXIDADO		010
SISTEMA DE ALUMINIO OXIDADO		010
SISTEMA DE ALUMINIO OXIDADO		010
SISTEMA DE ALUMINIO OXIDADO		010
SISTEMA DE ALUMINIO OXIDADO		010
SISTEMA DE ALUMINIO OXIDADO		010